

MATRIX **NEW** WORLD

Engineering Progress

Services

Combining the experience and expertise of professionals from a wide range of specializations and disciplines, Matrix provides the engineering services you need, when and where you need them.



ENVIRONMENTAL
ENGINEERING



GEOTECHNICAL
ENGINEERING



ECOLOGY
NATURAL RESOURCES



SITE/CIVIL
ENGINEERING



LAND SURVEYING
& HD LASER SCANNING



REMEDIATION
PROGRAM



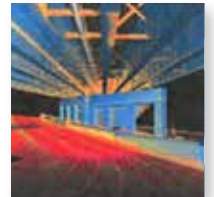
MARINE & WATERFRONT
ENGINEERING



DISASTER
RESPONSE



AIR QUALITY SERVICES
MONITORING & SUPPORT



BIM & 3D MODELING
SOLUTIONS



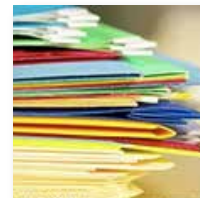
INDUSTRIAL
HYGIENE



PLANNING
FOR LAND DEVELOPMENT



LANDSCAPE
ARCHITECTURE



LSRP
CONSULTING



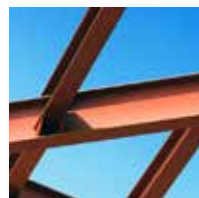
GIS - GEOGRAPHICAL
INFORMATION SYSTEMS



COASTAL RESILIENCY
ENGINEERING



FLOOD HAZARD
GRANT PROGRAM



STRUCTURAL
ENGINEERING



LEAD & ASBESTOS
REMEDIATION



OYSTER
SURVEYS



ENVIRONMENTAL
HEALTH & SAFETY (EHS)



AFFORDABLE HOUSING
DESIGN



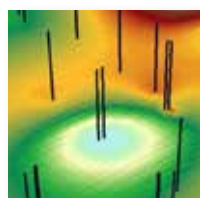
HABITAT
MITIGATION



ENVIRONMENTAL
IMPACT ASSESSMENT (EIA)



WATER SYSTEM
ENGINEERING



3D COMPUTER
MODELING



WELL DESIGN
CONSTRUCTION & TESTING



ENVIRONMENTAL SITE
ASSESSMENT (ESA)



WELL DEVELOPMENT
& TESTING



DUE DILIGENCE &
REGULATORY PERMITTING

MATRIX NEW WORLD
ENGINEERING
800.747.6287
MATRIXNEWORLD.COM

CERTIFIED WBE/DBE

NEW YORK
NEW JERSEY
LOUISIANA
TEXAS
ARIZONA



MATRIX **NEW** WORLD

Engineering Progress

A COMPANY OF ENGINEERS

- Thirty-year history of success and continued growth in the United States
- 200+ professionals – engineering, scientists and construction professionals with world class expertise
- Headquartered in New York City (NYC) area with operations in the US southwest and US Gulf Coast
- Track record on some of the most significant projects in US, relating to infrastructure and disaster response
- Leader in climate change resiliency projects in New York (NY) and New Jersey (NJ)
- Leader in disaster response services including multi-disciplinary damage assessments

Matrix New World Engineering is a company of engineering and science experts who focus on some of the nation's most pressing long-term challenges, including climate change, water supply, disaster response and urban revitalization. Applying our expertise to areas where these challenges are becoming particularly acute, Matrix intends to further focus our offerings and expertise on these and other emerging National Strategic Issues, where solving environmental challenges through careful planning and engineering is becoming an indispensable measure of success.

Matrix is a growing woman-owned business with offices in New York, New Jersey, Arizona, Louisiana, and Texas, and project experience throughout the US and the Caribbean.

Awards & Commendations

- "Silver Stevie Award, Female Entrepreneur of the Year – Business Services" Jayne Warne, PE, President (2018)
- "Gold Stevie Award, Women of the Year in Technology" Laurie LaPat-Polasko, V.P. (2018)
- "Outstanding Women Owned Business for 2012" by Anchin, Block & Anchin LLP
- Ernst and Young "Entrepreneur of the Year" Finalist Dennis Petrocelli, PG (2011)
- "Business of the Year" for 2010, for the 51–100 Employees Category
- One of "Top 50 Women-Owned Businesses" in diversitybusiness.com (2005)

Contact

Matrix New World Engineering

26 Columbia Turnpike, 2nd Floor
Florham Park, NJ 07932

Jayne Warne, PE, President
jwarne@matrixnewworld.com
or

Dennis Petrocelli, PG, Senior Vice President
dpetrocelli@matrixnewworld.com

973.240.1800
800.747.6287 (MATRIX)
matrixnewworld.com
Certified WBE/DBE