



# MATRIX **NEW**WORLD

Engineering Progress

## ENVIRONMENTAL SERVICES

### **Matrix is qualified.**

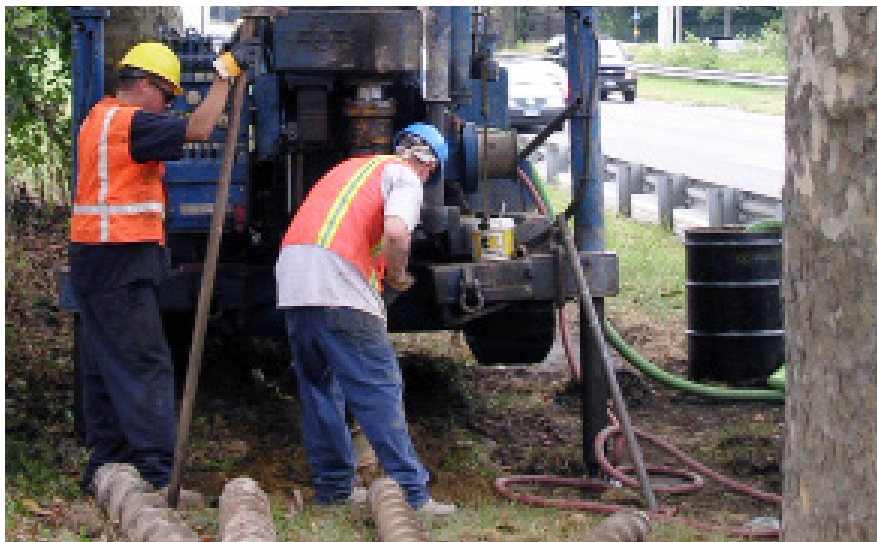
Matrix provides a unique multi-disciplinary approach to projects that involve the physical and natural environment. Long recognized for technical excellence, we bring more than two decades of successful, progressive experience to projects involving the identification of potential sources of contamination and associated development constraints. We offer turnkey services, from the investigation of existing conditions, remedial investigations, and remediation design, to the operation of treatment systems, and oversight of construction.

In addition to remediation issues, Matrix's experienced professionals are qualified to address a wide variety of environmental health and safety issues from environmental permitting and compliance, hazardous waste/hazardous materials management, asbestos and lead, survey and design, environmental management systems and National Environmental Policy Act (NEPA) documentation. We provide services across a wide range of assignments, from a simple property transaction, to a large scale transportation and infrastructure design and construction project.

Matrix provides full-service permitting associated with development of properties and infrastructure projects to allow for the seamless progression of projects. We also provide our clients with regulatory compliance services to allow them to conduct their daily operations. Matrix understands that it is essential to identify environmental constraints ahead of final design and construction, to minimize the impact to the contaminated areas, and to understand the nature and extent of the contamination prior to construction. In that way, the contamination can be more effectively managed, minimizing the impacts to cost and schedule.

### **Services provided**

- Phase I and II Environmental Assessments
- Preliminary Assessments & Site Investigations
- Remedial Investigations (RIs) & Feasibility Studies (FS)
- Remedial Alternative Analysis & Remediation Design
- Asbestos, Lead Paint Survey, Abatement Design & Project Monitoring
- Corridor Analysis/Screening
- National Environmental Policy Act (NEPA) Compliance
- Hazardous/Contaminated Materials Management
- Construction Environmental Control Plans (CECP)
- Underground/Aboveground Tank Management & Removal
- Construction Plans, Specifications & Cost Estimates
- Spill Prevention, Control & Counter-measure (SPCC), Discharge Prevention Containment & Countermeasure (DPCC) Plans
- Regulatory Compliance & Permitting
- Environmental Compliance Audits & Environmental Management Systems/ISO 14001



### **Contact**

**Matrix New World Engineering, P.C.**

973.240.1800

800.747.6287 (MATRIX)

[matrixnewworld.com](http://matrixnewworld.com)

Certified WBE/DBE/SBE