

MATRIX **NEW** WORLD

Engineering Progress

Services

Matrix combines the experience and expertise of professionals from a wide range of specializations and disciplines.

MATRIX NEW WORLD
ENGINEERING
800.747.6287
MATRIXNEWORLD.COM

CERTIFIED WBE/DBE/SBE

NEW JERSEY
NEW YORK
LOUISIANA
TEXAS
ARIZONA



ENVIRONMENTAL
ENGINEERING



GEOTECHNICAL
ENGINEERING



ECOLOGY
NATURAL RESOURCES



CIVIL
ENGINEERING



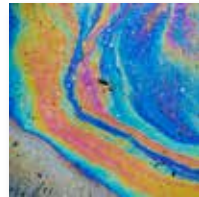
LAND SURVEYING
& MAPPING



MARINE & WATERFRONT
ENGINEERING



TRANSPORTATION
& INFRASTRUCTURE



SPILL
RESPONSE



DISASTER
RESPONSE



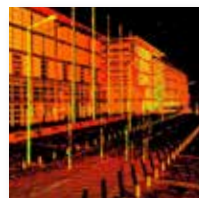
STRUCTURAL
ENGINEERING



PLANNING
FOR LAND DEVELOPMENT



BIM & 3D MODELING
SOLUTIONS



HD LASER SCANNING
SURVEYING



INDUSTRIAL WATER
SUPPLY TREATMENT



WASTEWATER
TREATMENT PRACTICES



GRANT WRITING
SERVICES



GIS - GEOGRAPHICAL
INFORMATION SYSTEMS



LSRP
CONSULTING



REMEDIATION
PROGRAM



AFFORDABLE
HOUSING



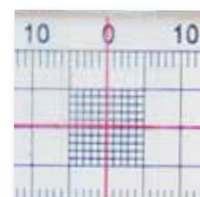
ENVIRONMENTAL
INSURANCE



HAZMAT
CONSULTING



LANDSCAPE
ARCHITECTURE



INSTRUMENTATION
GEOTECH & STRUCTURAL



COASTAL RESILIENCY
ENGINEERING



FLOOD HAZARD
GRANT PROGRAM



CONSTRUCTION
SUPPORT



OYSTER
RESOURCE TEAM



COASTAL
SERVICES



TELECOMMUNICATIONS
ENGINEERING



MATRIX **NEW**WORLD

Engineering Progress

A COMPANY OF ENGINEERS

Matrix engineers progress.

We perform important, necessary, engineering work in the natural world and in man-made environments. We address some of the most critical and relevant issues of the day. We assist our partners in streamlining their processes, improving results, lowering costs, and together, moving civilization forward.

Over the last 25 years, Matrix New World Engineering (Matrix) has offered the private and public sectors engineering, surveying and environmental services. In that time, Matrix has taken the lead in programs including environmental assessments, investigations and remediation, construction management, geotechnical and civil engineering design.

From our first engagement, we understood we were involved not simply in important work, but critical work. Toward that end, we built and now continue to redefine a firm that combines the experience and expertise of professionals from a range of specializations as varied as ecological restoration and infrastructure management services to land surveyors and wetland scientists.

Our belief in the importance of this work has led us to embrace innovation, encourage creative solutions and push best practices. The result: in the last two decades we have opened 10 offices across the country to support our engineers and teams participating in some of the country's most urgent work:

- Spill Response throughout the United States including BP Deepwater
- Crane Co., Phoenix Arizona Superfund Site
- Superstorm Sandy Response and NJ Waterways Contract
- Post Hurricane Infrastructure Hardening and Resiliency Studies for Public Agencies and the Private Sector
- Critical NYC Infrastructure Improvement Projects – Access to the Region Core, 2nd Avenue Subway, East Side Access Project, FRA Northeast Corridor Assessment

Whether engaged in mitigating man-made catastrophes, such as the damage caused by the Gulf spill, or managing the aftermath of natural disasters, such as Superstorm Sandy, we are very much aware that our clients have charged us to mitigate damage, prevent further harm, and help improve the human condition.

We are a company of engineers and scientists and as such have always understood our obligations to our clients and their communities. We see our work not simply in terms of problem and solution, but rather as a moral imperative, which demands excellence in every task we perform, from regular maintenance to addressing the most complicated and significant engineering issues.

Awards & Commendations

The growth of Matrix has not gone unnoticed by the industry:

- "Outstanding Women Owned Business for 2012" by Anchin, Block & Anchin LLP
- Ernst and Young "Entrepreneur of the Year" Finalist Dennis Petrocelli, PG (2011)
- "Business of the Year" for 2010, for the 51-100 Employees Category
- One of "Top 50 Women-Owned Businesses" in diversitybusiness.com (2005)

Contact

Matrix New World Engineering

Jayne Warne, PE

President

jjwarne@matrixnewworld.com

or

Dennis Petrocelli, PG

Senior Vice President

dpetrocelli@matrixnewworld.com

973.240.1800

800.747.6287 (MATRIX)

matrixnewworld.com

Certified WBE/DBE/SBE